

(DON'T!)
**WASTE
WATER**

The Start-Up That's Been Around for 222 Years ... and is still going strong!

With Andreas Müller,
CEO @

+GF+



(DON'T!)
**WASTE
WATER**

Direct Lithium Extraction in its one-stop-shop from brine resource to battery-grade lithium is yet to reach commercial scale.

But could it use a cheat sheet?

When you have new technologies, if you combine them with traditional companies with a sound footprint across the world, you obviously can scale it much faster.



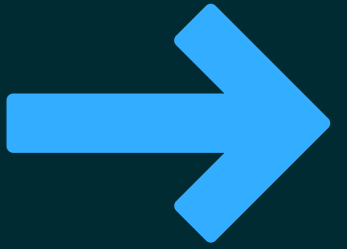


And indeed, as DLE heavily relies on fluid handling and flow solutions, it resonates quite well with one of GF's divisions know-how.

**(DON'T!)
WASTE
WATER**



With our 17 fabrication centers within GF Piping Systems, we can provide standardized, high-level solutions anywhere on this planet. We can build the skids to the process companies' drawings, but we can also help them engineer them as long as we understand their processes.

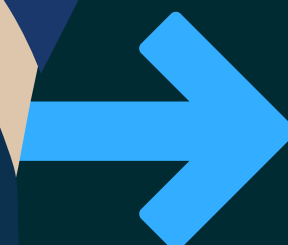


Now combining start-ups and mature industrial giants can come at the cost of a cultural clash.

(DON'T!)
WASTE WATER



It's one of the reasons why we have put Culture as one of the key pillars in our Strategy 2025. We are actively working on it! 10'000 people underwent these experiments to experience our values.





(DON'T!)
**WASTE
WATER**

The bottom line here is that a successful large industrial group also was a start-up one day, and a successful one.



If you look at our market capitalization today, we're a pretty old unicorn!



(DON'T!)

**WASTE
WATER**

This kind of DNA is still within our organization. This curiosity about new technologies, about innovations: that's a very good hinge to collaborate with start-up companies!

In the end, it's all about cultivating that drive. Culture, you said?



Wanna find out more about the strategic interest and involvement of a sustainability giant in the EV revolution?

Check out this week's full interview with Andreas Müller on the



Podcast.



Check it out!