

# Denise Mall

is the Managing Director of

## Ens0 Earth

(DON'T!)  
**WASTE  
WATER**

What if the solution to the current Sustainability challenges was lying in plain sight, right under our eyes?

Nature has spent 3.8 billion years doing the R&D required to produce life. All we have to do is learn from her!

We humans often see ourselves as more clever than we actually are. This is undoubtedly comfortable: as wrong as we may behave, someone a bit more clever will sort our mess somewhere in the future.

## But what if there was no future?

We have pushed all the natural boundaries to the point of breaking. We did it in ignorance: we thought we are clever, but we were not!



Now the good news, as we've just seen, is that nature may still have solutions. Those have a name:

(DON'T!)  
**WASTE  
WATER**

# Biomimicry.

Biomimicry goes into three levels:

- imitate nature's form  
(aka her structure)

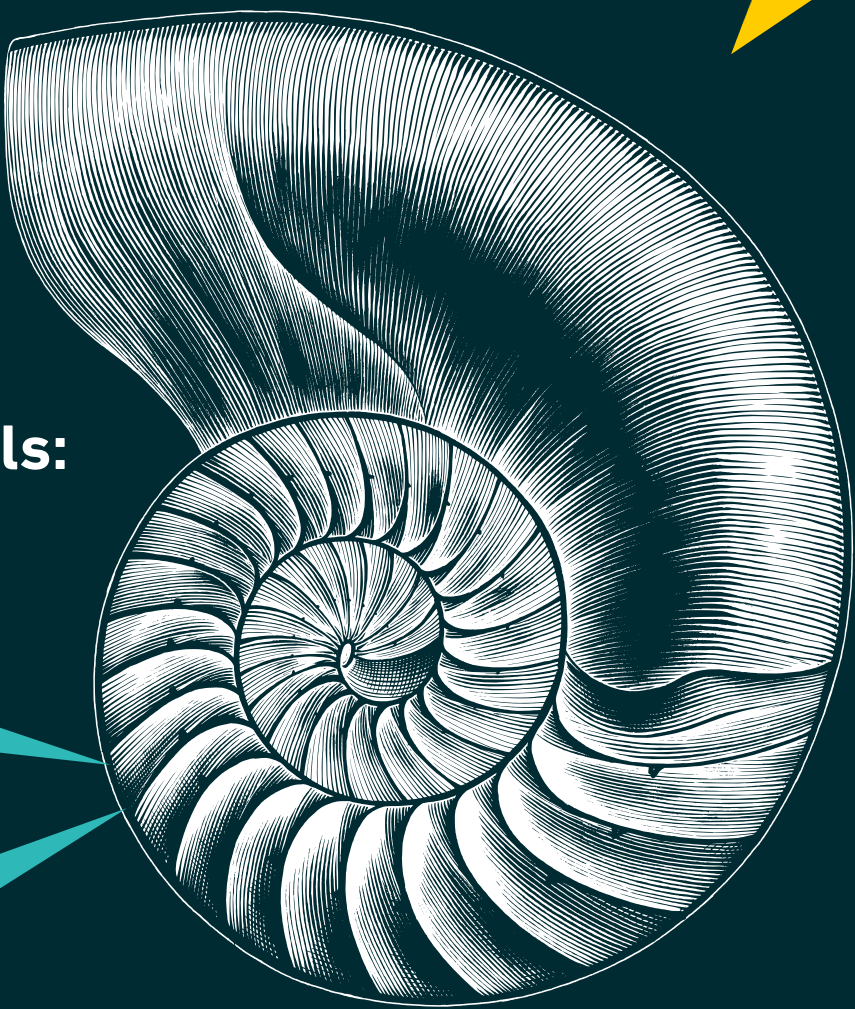
- get her recipes  
(aka her processes)

- replicate its systems

... the most potent designs incorporate all of the above.

When you truly understand the natural cycles, you can leverage regenerative thinking to identify where to fix the system.

To better understand how Denise became one of the most vocal advocates for Biomimicry and Net Positive Water, we have to go back a bit in time.



In 2008, Janine Benyus gave a conference in Cape Town.

(DON'T!)  
**WASTE  
WATER**

She's like the grandmother of biomimicry!  
She coined the phrase; she defined  
the principles.

Denise, who was  
in the assistance,  
was already running  
a very successful  
engineering company.  
But the potential and the  
impact of biomimicry  
convinced her to take the  
bold decision to pivot it.

I started the EnsO Earth foundation to ensure  
that my great-grandchildren have a planet!



From there on, EnsO Earth served as a platform for (always more) ambitious projects like:

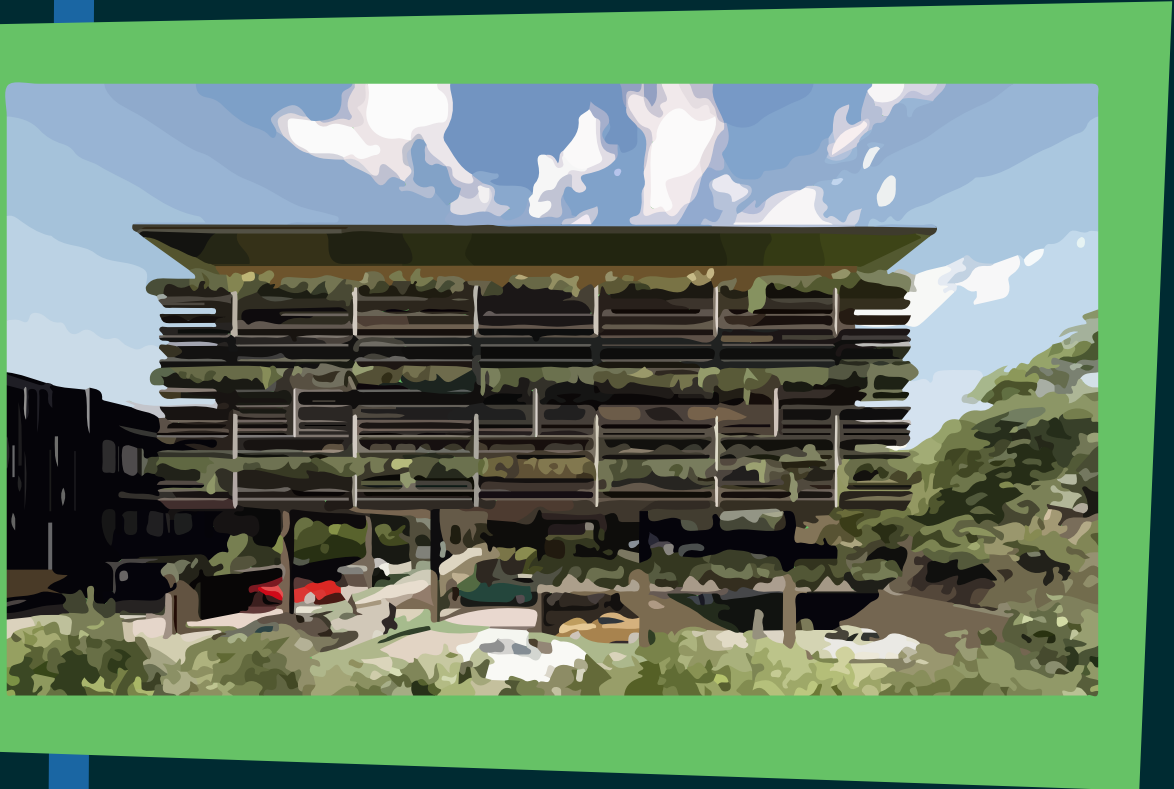
(DON'T!)  
**WASTE WATER**

## The Living Machine

where 1,000 liters of greywater a day are reclaimed, without external energy or chemical input, while valorizing all treatment by-products like bio-methane.



## The Living Building



that takes the concept to an even higher level by also covering blackwater and overall integration within the building's environment.

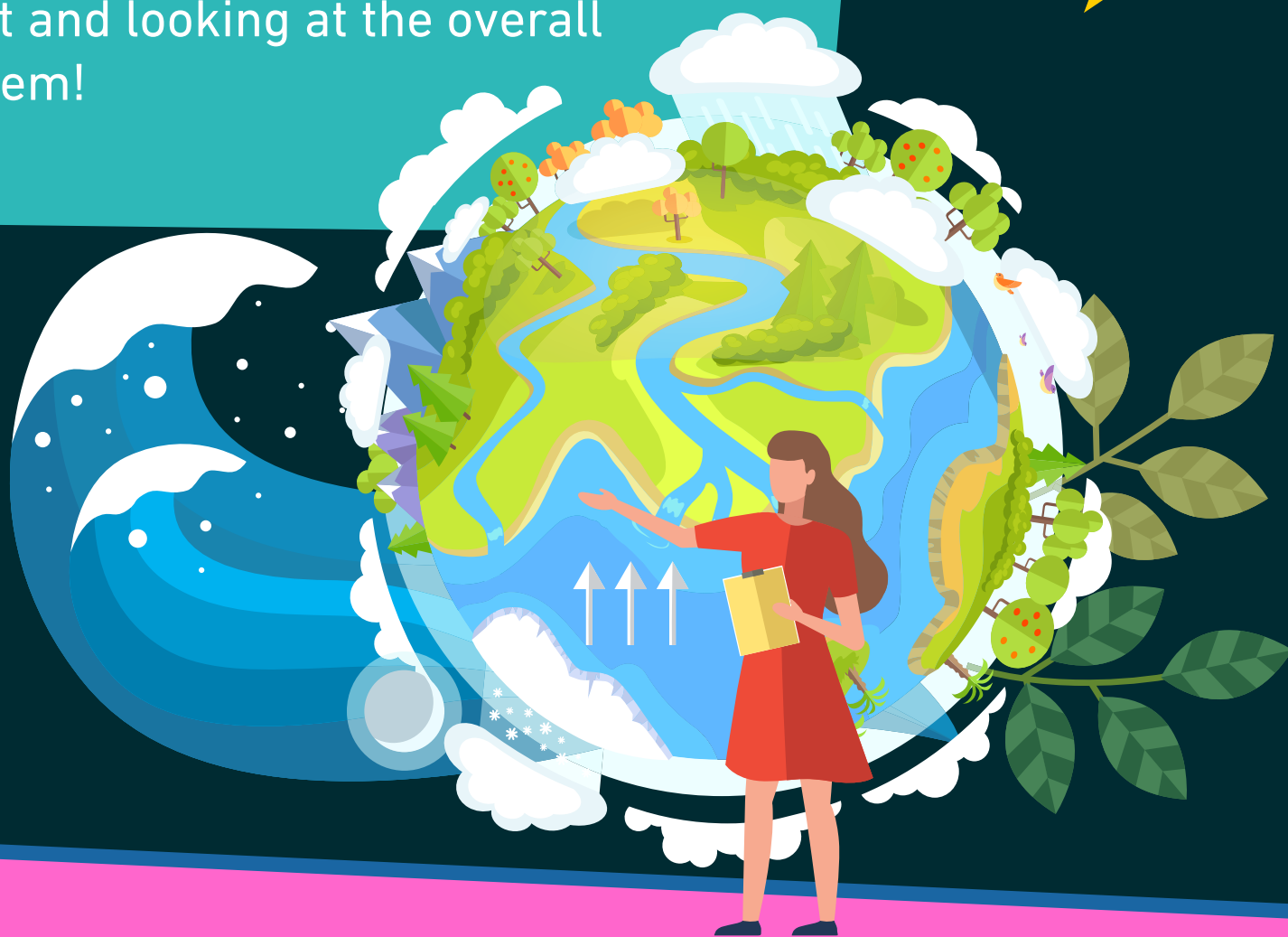
## All of this feeds into the concept of "Net Positive Water."



(DON'T!)

# WASTE WATER

Net Positive Water is mimicking the natural water cycle, from rainwater harvesting to water and wastewater management. It's then also zooming out and looking at the overall picture as a system!



**Wouldn't we all be better served if we finally disrupted our water infrastructure by generalizing this approach?**

## **We also covered:**

- How becoming an Engineer as a woman is still not as much of a common path as being a teacher, a lawyer, or a nurse
- How most of the pollution can be traced back to humans, pouring chemistry into nature
- How there is no such thing as "waste" in nature, but only valuable building blocks and natural resources.
- How we're kind of stupidly using drinking water for water applications that don't require at all such a level of purity
- How it is our collective responsibility to sort the mess we've created
- How "Day Zero" may sadly become much more common all around the Planet
- How transposing the International Space Station's water management to earth is only a matter of financial equation - and how we value water stress.
- Biophilic environmental connection, the power of plants, all being organs of a bigger body, working on reality, not fiction, and much more!

**Don't miss a single bite: head over to [dww.show](https://dww.show)!**